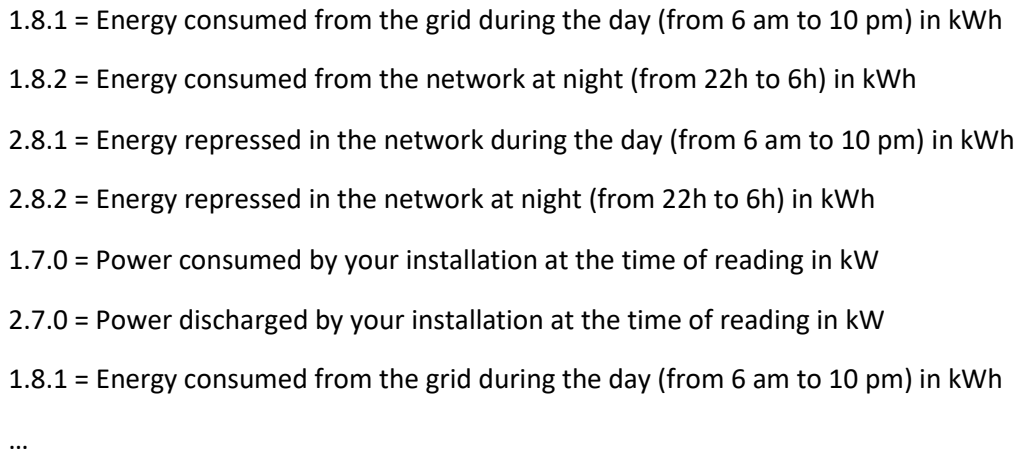
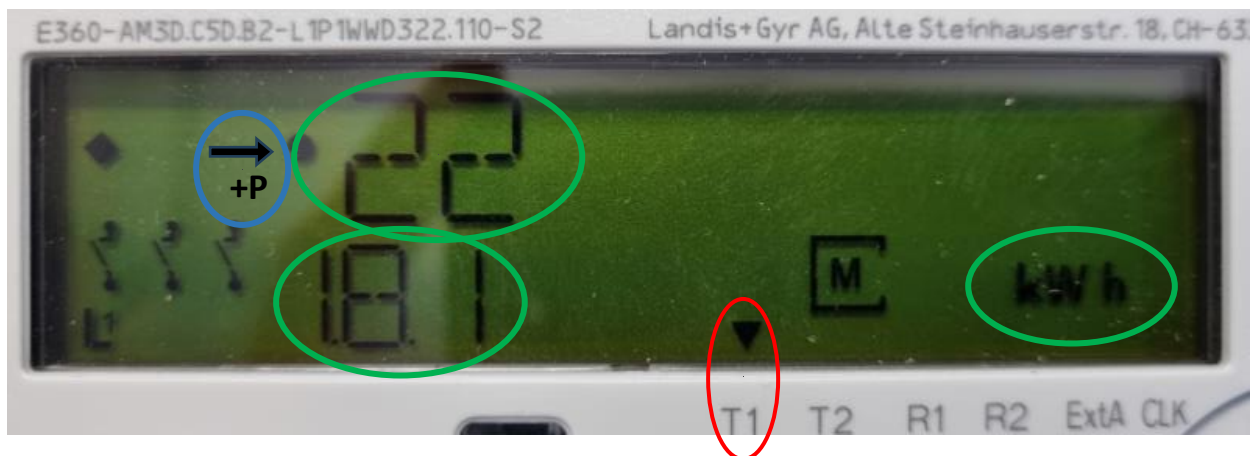


How to read the main indexes of your Smart Meter E360

The electricity meter is programmed to cycle through the various information in the following order:

- 
- 1.8.1 = Energy consumed from the grid during the day (from 6 am to 10 pm) in kWh
 - 1.8.2 = Energy consumed from the network at night (from 22h to 6h) in kWh
 - 2.8.1 = Energy repressed in the network during the day (from 6 am to 10 pm) in kWh
 - 2.8.2 = Energy repressed in the network at night (from 22h to 6h) in kWh
 - 1.7.0 = Power consumed by your installation at the time of reading in kW
 - 2.7.0 = Power discharged by your installation at the time of reading in kW
 - 1.8.1 = Energy consumed from the grid during the day (from 6 am to 10 pm) in kWh
 - ...

Each information will be displayed for 10 seconds then it will rollback indefinitely if you don't press any buttons.



In this example we can read **the energy consumed from the network on the day** expressed in **kWh**, in our case it is **22**.

The **small arrow** on the right with the **+P** mark indicates that at the time of reading, energy is taken from the network; if it were oriented to the left it would mean that energy would be repressed from your installation to the network.

We can also observe a **triangle** above the inscription **T1** which indicates that we are in daytime tariff therefore between 6 am and 10 pm, the consumption is thus recorded on the 1.8.1 and the energy repressed on the 2.8.1 ; as of 10:01 pm the triangle will move over T2 and it will be 1.8.2 and 2.8.2 which will then be incremented.